

## D.L. George & Sons Mfg.

13321 Midvale Road, Waynesboro, Pa. 17268

Phone 717-765-4700 800-765-1246

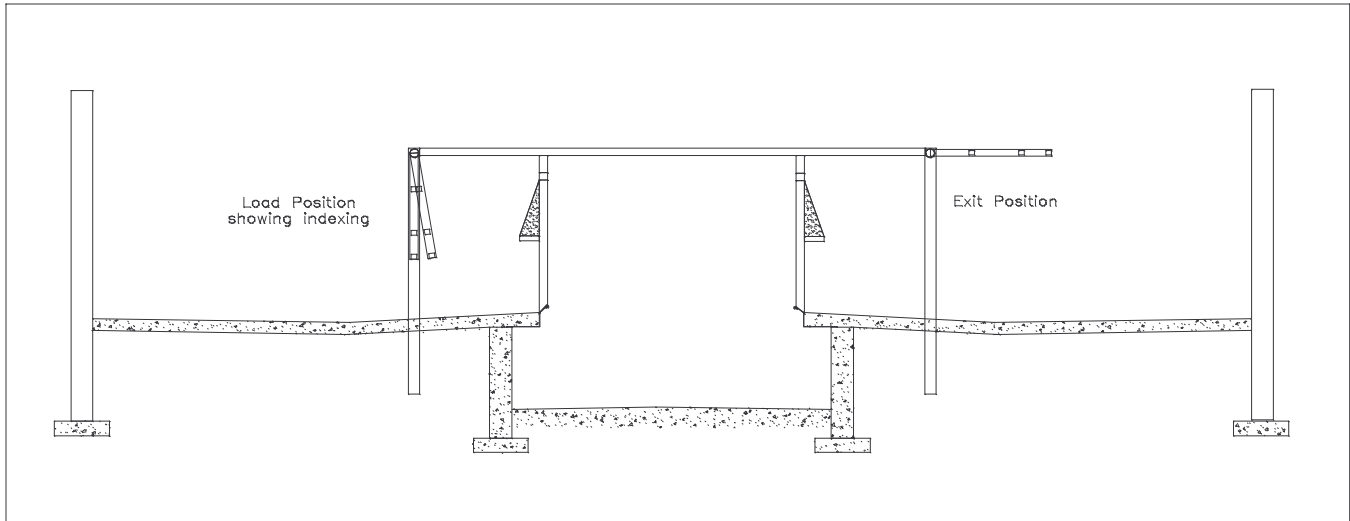
Fax 717-765-4734

www.dlgeorge-sons.com

# Rapid Exit Indexing Herringbone Parlor



The Rapid Exit Indexing Herringbone Parlor is a Herringbone Parlor with a difference. The indexing straight rail in the front allows excellent cow positioning. The unique straight-thru splash shield in the back makes it easy for cows to load without hitting their pins because the shield slopes away from the cow.

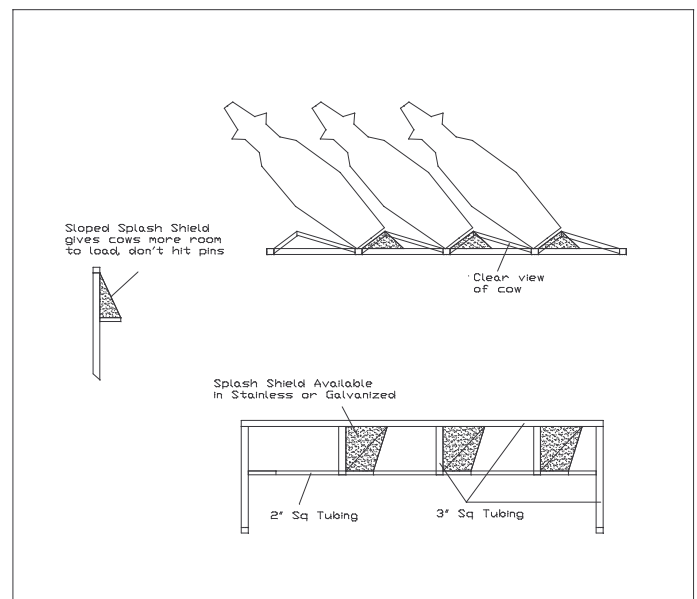


The Rapid Exit Indexing Herringbone parlor is startling in its simplicity. The straight rail in the front simply flips up and away from the cows to exit, and is rotated back over center into the stall to index. An arch goes across the parlor to support both the stalls and the rear splash shield. The rear splash shield is sloped to match the contour of the cow which makes it easier to load. The splash shield is suspended between the ends of the parlor which allows excellent visibility. The design is extremely flexible and allows cow spacing of almost any dimension (typically 36" - 48" for herringbone parlors.)

Of course, its not just enough to have mechanical simplicity, the stalls have to be built to last. The posts and arches are made of 4" structural steel tubing that is coated after fabrication with the same thermal spray galvanizing process used in many naval ships. The frame of the rear splash shield and the indexing rail are made of 3" and 2" high tensile strength square galvanized tubing. The splash shield and curbing are made of 11 gauge material and are available either stainless steel or galvanized.

The stalls are raised and lowered with a hydraulic power unit for reliability and minimal long term maintenance.

**Inexpensive and built to stay that way. Optimum operator comfort, convenience and safety. Good overall parlor efficiency. Excellent cow comfort and safety. Optional shroud to cover equipment. Ease of installation. These are all reasons to consider D. L. George & Sons Mfg.**



## D.L. George & Sons Mfg.

13321 Midvale Road, Waynesboro, Pa. 17268

Phone 717-765-4700 800-765-1246

Fax 717-765-4734

www.dlgeorge-sons.com

# Rapid Exit Indexing Herringbone Parlor



## Key Design Specifications

### Materials:

All 2" and 3" Square tubing is 12 ga, with galvanized finish

Legs and Arches are 4" x 4" Square tube with thermal spray galvanized finish

All other steel components have either thermal spray galvanized finish -or- 2 part corrosion resistant paint finish

Curb and Gutter are either 11 ga Galvanized sheet or 11 ga Type 409 Stainless Steel

Height Recommended	96"
Minimum Height For Standard Configuration	78"
Length of Parlor recommended	stall width x # of stalls plus 9 feet
Length of Parlor Minimum	stall width x # of stalls plus 5 feet
Width of Cow Platform Recommended	13'-6"
Width of Cow Platform Minimum (small parlor only)	11'-0"
Stall width recommended	36 - 48" ctr-to-ctr

### Options available (custom pricing)

Front 'S'-Rail instead of straight rail

All Stainless Steel Parlor

Shroud on back of splash shield to mount equipment in

Custom shapes on curbing

Custom paint colors

Custom controls packages

**D.L. George & Sons Mfg.**

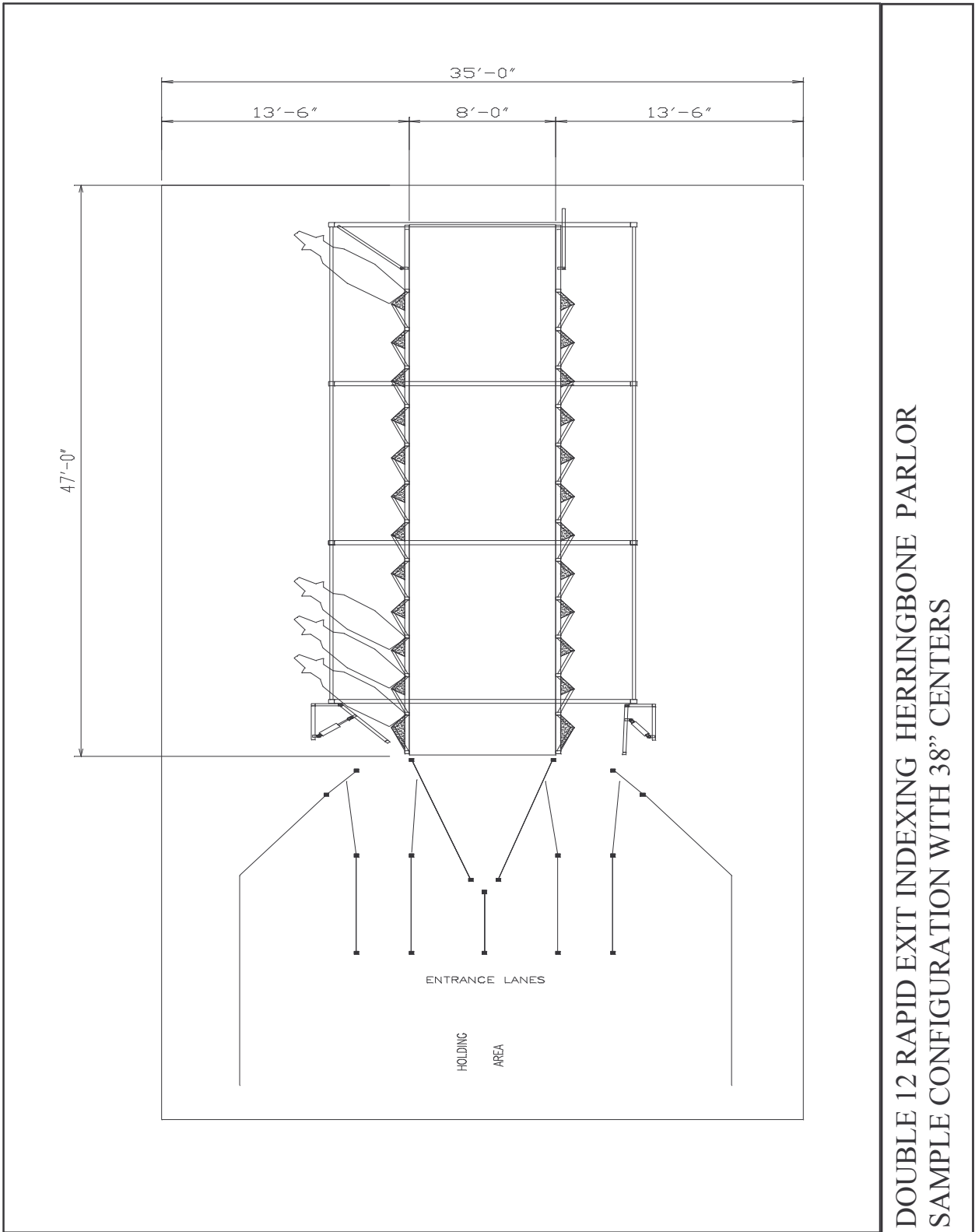
13321 Midvale Road, Waynesboro, Pa. 17268

Phone 717-765-4700 800-765-1246

Fax 717-765-4734

www.dlgeorge-sons.com

# Rapid Exit Indexing Herringbone Parlor



DOUBLE 12 RAPID EXIT INDEXING HERRINGBONE PARLOR  
SAMPLE CONFIGURATION WITH 38" CENTERS

**D.L. George & Sons Mfg.**

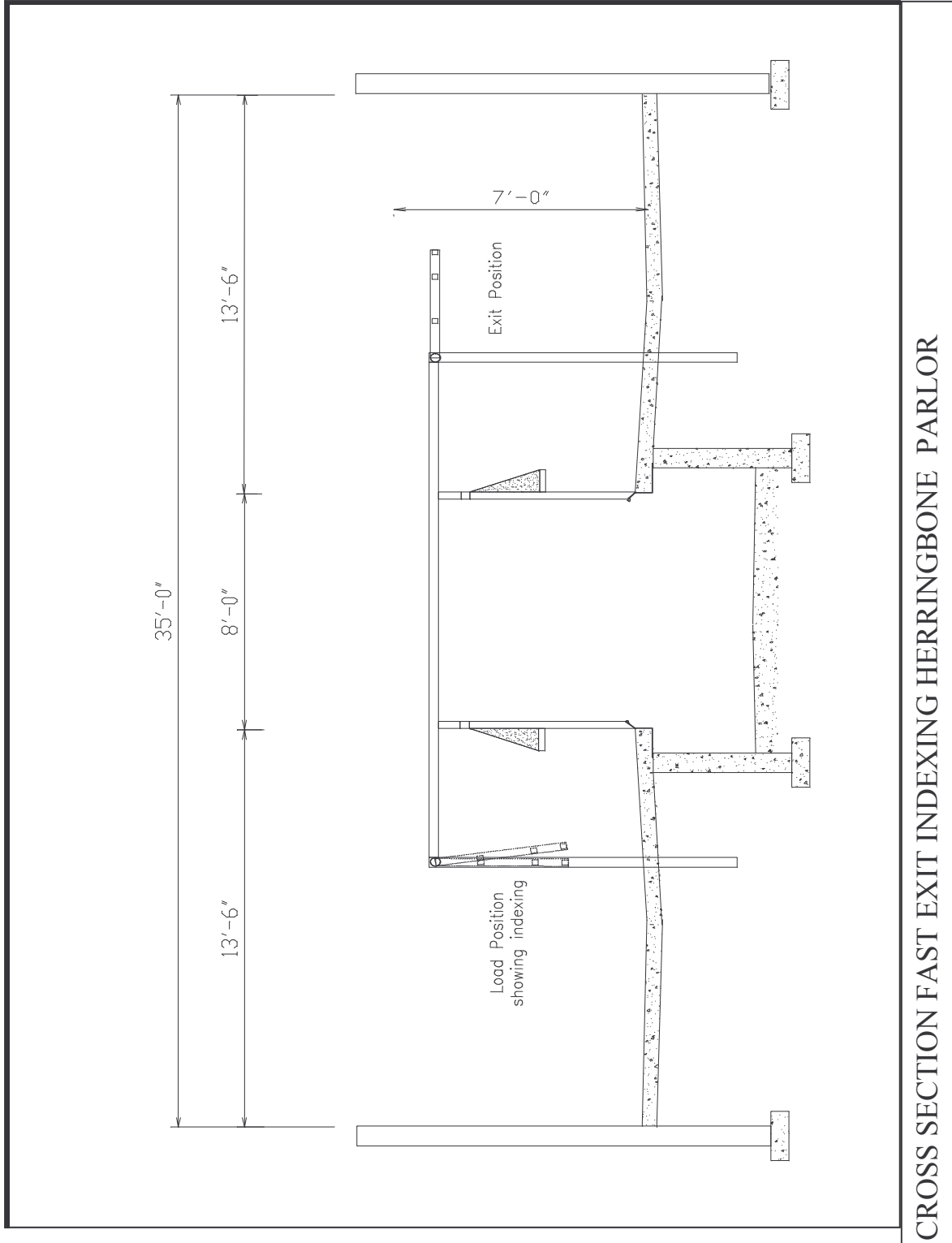
13321 Midvale Road, Waynesboro, Pa. 17268

Phone 717-765-4700 800-765-1246

Fax 717-765-4734

www.dlgeorge-sons.com

# Rapid Exit Indexing Herringbone Parlor



**D.L. George & Sons Mfg.**

13321 Midvale Road, Waynesboro, Pa. 17268

Phone 717-765-4700 800-765-1246

Fax 717-765-4734

www.dlgeorge-sons.com

# Rapid Exit Indexing Herringbone Parlor



## Features and Benefits

<u>Feature</u>	<u>Benefit</u>
Herringbone Design	Visibility of cows
Rapid Exit Indexing Design	One mechanical motion provides both exit and indexing. Minimal maintenance. Good cow throughput
Straight-thru splash shield	Ease of loading for cows. Cow safety. Excellent visibility
Stall sections assembled at plant	Ease of installation, reduced installation time and expense
Structural tubing legs and arches	Structural strength is much greater than 4" pipe, long term durability
High tensile strength square tubing	Better strength and corrosion resistance than 2" pipe, since tubing is square it is much easier to weld than round pipe and you can expect greater durability at weld joints.
Cantilevered curbing	Ease of installation. Keeps milk lines and meters etc. out of the way of the operator.
UHMW bushings on gates and indexing rail pivot	No lubrication required means lower maintenance and greater long-term durability
Hydraulic operating unit	Low maintenance requirement, very reliable operating system
Factory supervised installation option	Ease of installation, reduced installation cost.