

D.L. George & Sons Mfg.

13321 Midvale Road, Waynesboro, Pa. 17268

Phone 717-765-4700 800-765-1246

Fax 717-765-4734

www.dlgeorge-sons.com

New Zealand

27" C/C



The Ultimate in Efficiency, Safety and Durability

KNZ Milking Parlor

The Industry's Best Value Stalls

- * Heavy-duty corrosion-resistant construction-structural framing 2 1/4" high-tensile square galvanized tube steel.
- * Moveable brisket resistant rail position cows
- * Designed to effectively reduce maintenance, power unit not needed
- * High cow thru put, cows are comfortable
- * Improved operator safety and well-being

Impressive super K Pendulum Gate D16 KNZ Parlor

- * Fast cut off of entering cows
- * Rugged heavy duty pivot point
- * Operate from anywhere in operator area
- * Height and speed adjustable

Plus, you can customize your KNZ to meet your requirements.
COMBINE A PARLOR, PRIORITY GATES AND CROWD GATE FOR MAXIMUM THRU PUT



D.L. George & Sons Mfg.

13321 Midvale Road, Waynesboro, Pa. 17268

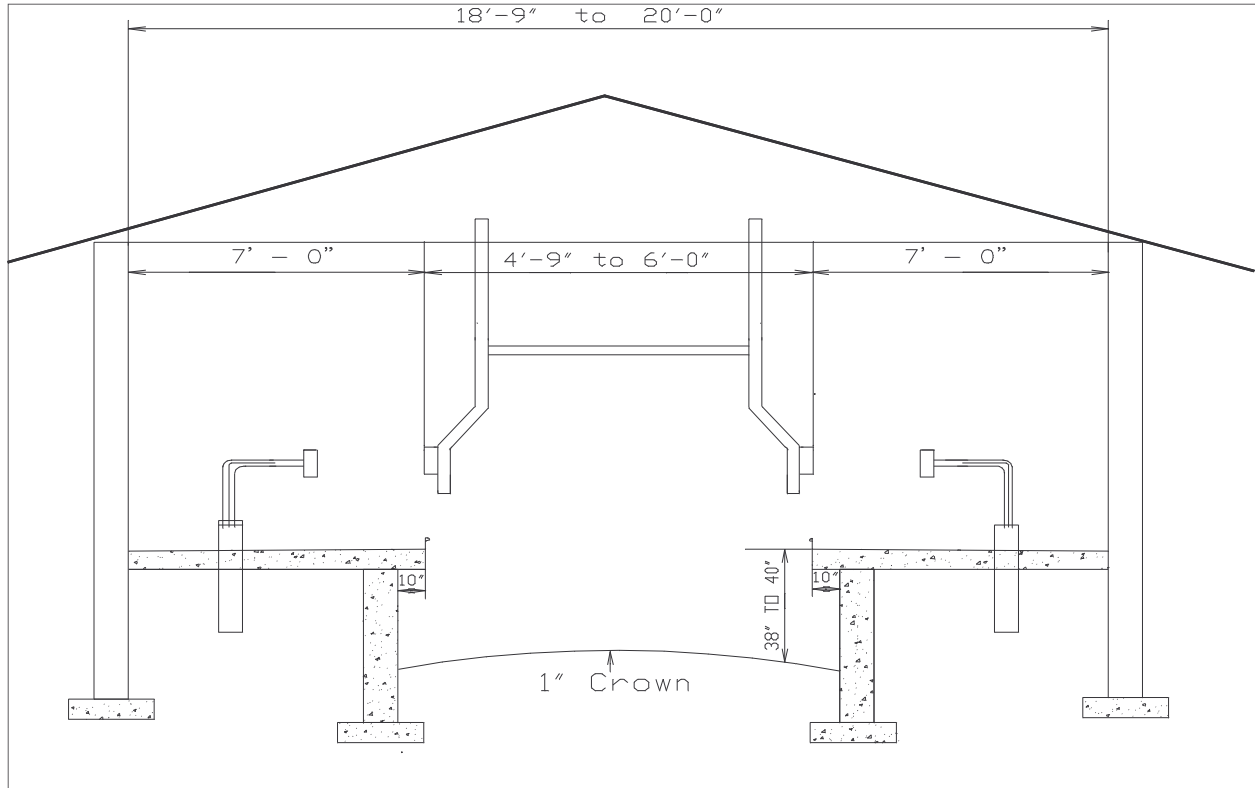
Phone 717-765-4700 800-765-1246

Fax 717-765-4734

www.dlgeorge-sons.com

New Zealand

27" C/C



CROSS SECTION
NEW ZEALAND PARLOR

NOTE: THESE DIMENSIONS ARE THE
STANDARD BUT CAN BE CHANGED

- Package Includes:
- Stalls With "H" Frames
- Some Fencing for Entrance Lane
- Pendulum Exit Gate
- Training Backer Bar

D.L. George & Sons Mfg.

13321 Midvale Road, Waynesboro, Pa. 17268

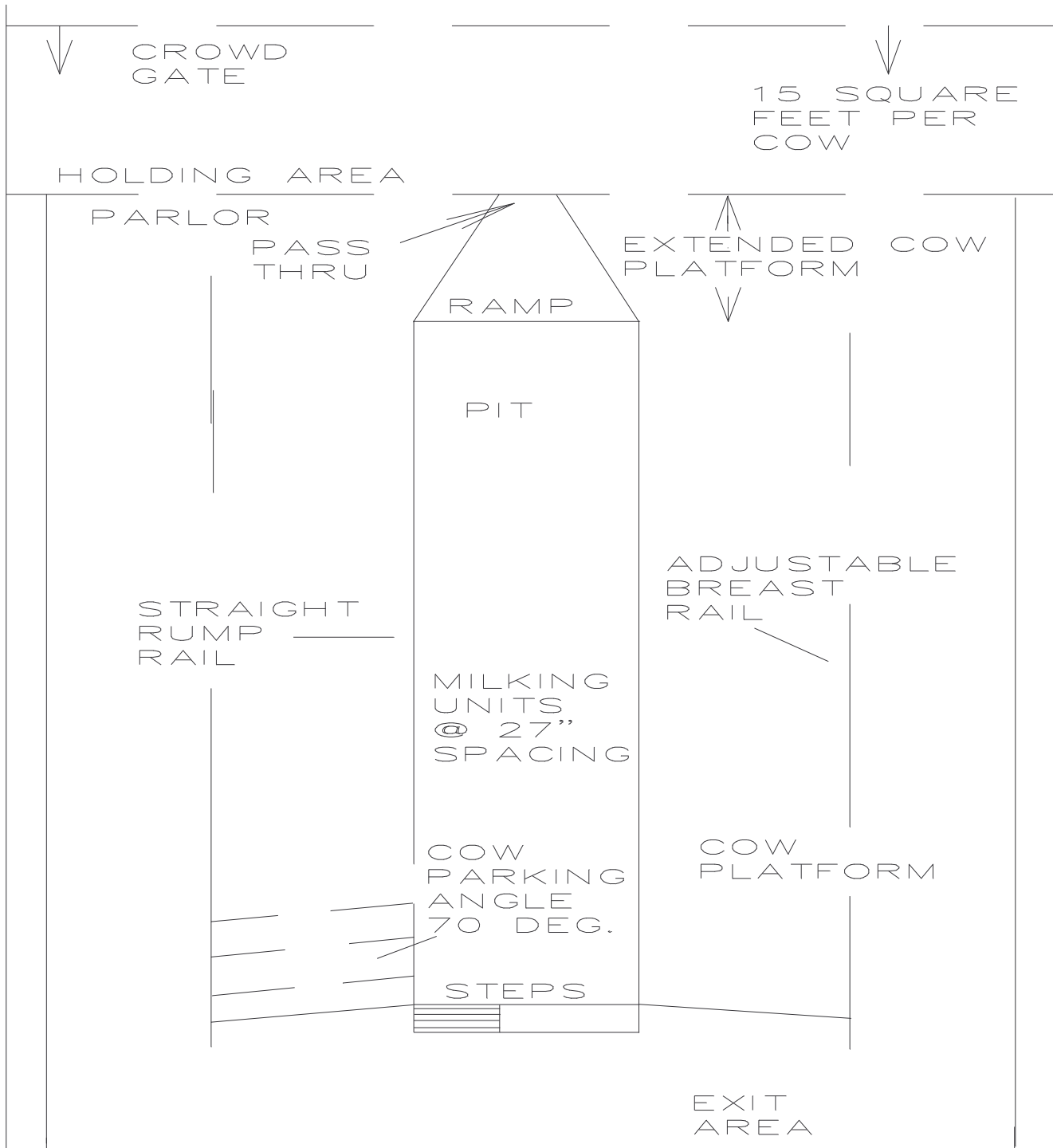
Phone 717-765-4700 800-765-1246

Fax 717-765-4734

www.dlgeorge-sons.com

True New Zealand

27" C/C



PLAN VIEW

D.L. George & Sons Mfg.

13321 Midvale Road, Waynesboro, Pa. 17268

Phone 717-765-4700 800-765-1246

Fax 717-765-4734

www.dlgeorge-sons.com

New Zealand

27" C/C



Key Design Specifications

Materials:

All 2" square tubing is 11 ga. with galvanized finish

All other steel components have either thermal spray galvanized finish -or- 2 part corrosion resistant paint finish

Height Recommended 8' for Jerseys or 10' for Holsteins

Length of Parlor Pit recommended 27" x # of cows plus 36"

Length of Parlor Pit Minimum 24" x # of cows plus 36"

Length of Parlor Pit Recommended with Steps (at one end) 27" x # of cows plus 6'-0"

Width of Cow Platform Recommended 7'

Width of Cow Platform Minimum (small parlor only) 6' - 2"

Recommended Cross Over Width 5' to 10'

Options available (custom pricing)

Splash Shield

Curbing

Gutter